



Prime-GPT
German Pump Technology



По вопросам продаж и поддержки обращайтесь:

Архангельск (8182)63-90-72
Астана +7(7172)727-132
Белгород (4722)40-23-64
Брянск (4832)59-03-52
Владивосток (423)249-28-31
Волгоград (844)278-03-48
Вологда (8172)26-41-59
Воронеж (473)204-51-73
Екатеринбург (343)384-55-89
Иваново (4932)77-34-06
Ижевск (3412)26-03-58
Казань (843)206-01-48

Калининград (4012)72-03-81
Калуга (4842)92-23-67
Кемерово (3842)65-04-62
Киров (8332)68-02-04
Краснодар (861)203-40-90
Красноярск (391)204-63-61
Курск (4712)77-13-04
Липецк (4742)52-20-81
Магнитогорск (3519)55-03-13
Москва (495)268-04-70
Мурманск (8152)59-64-93
Набережные Челны (8552)20-53-41

Нижний Новгород (831)429-08-12
Новокузнецк (3843)20-46-81
Новосибирск (383)227-86-73
Орел (4862)44-53-42
Оренбург (3532)37-68-04
Пенза (8412)22-31-16
Пермь (342)205-81-47
Ростов-на-Дону (863)308-18-15
Рязань (4912)46-61-64
Самара (846)206-03-16
Санкт-Петербург (812)309-46-40
Саратов (845)249-38-78

Смоленск (4812)29-41-54
Сочи (862)225-72-31
Ставрополь (8652)20-65-13
Тверь (4822)63-31-35
Томск (3822)98-41-53
Тула (4872)74-02-29
Тюмень (3452)66-21-18
Ульяновск (8422)24-23-59
Уфа (347)229-48-12
Челябинск (351)202-03-61
Череповец (8202)49-02-64
Ярославль (4852)69-52-93

Единый адрес для всех регионов: pxd@nt-rt.ru || www.pd.nt-rt.ru

W e l c o m e t o P r i m e - G P T

Prime-GPT was initially founded as Trinity Pumpenwerk GmbH and later renamed Trinity-HDD. The strategy was to sell and service American made pumping equipment. Our focus was to help international customers receive better after-sales service and easier access to critical spare parts. Simply put, the idea was to establish ourselves as distributors of pumps & spare parts and conduct business according to local customs.

We began and are still purchasing from the well-known pump manufacturers in the industry, that would grant us distributor pricing. Later we began to build important pump parts for pumps which are obsolete and parts which are very rare.

Needing capital to fuel our rapid growth, the decision was made to sell shares of TRINITY Pumpenwerk to Prime Drilling GmbH. Within the framework of this re-organization Trinity Pumpenwerk GmbH became an official division of Prime Drilling GmbH and was renamed TRINITY-HDD.

To reflect the long-standing excellent cooperation with Prime Drilling in the company's name TRINITY-HDD was renamed **Prime-GPT** (German Pump Technologie) GmbH. 90% of our market comprises HDD-related customers. The other 10% of our market is vertical drilling- (geothermal, oil & gas) and industrial applications.

Therefore our slogan remains

...keeps your fluid moving!




Today **Prime-GPT** and **PRIME DRILLING®** work together as designers, developers and manufacturers of state of the art pumping equipment and pump consumables. We build a line of reciprocating piston pumps and packages designed specifically for the HDD industry. The maximum capacities of these pumps exceed 4000 LPM (1060 GPM) and are rated up to 110 bar (1600 psi). We are investing heavily into advanced software and machinery that allows us to deliver products that last longer and are more economical. There is a lot more to tell and we hope we get a chance to show you what we can do for you!

Prime Drilling® GmbH is a global leader in the design, development, and production of advanced Horizontal Directional Drilling Rigs. Sizes range from 300 kN (30 t) to 6,000 kN (600 t) pull force. All rigs are based on standard platforms which can be modified to customer's requirements.

The company motto »for your success« means everything to us. We understand that a successful crossing is particularly dependent upon the reliability of the equipment involved. For this reason it is not enough for us to focus on superior technical characteristics.

Driven by the objective to deliver robust, low-maintenance drill rigs that bring top performance in the most demanding environments, we have our products developed and our services performed by a highly qualified team with decades of experience in the field of Horizontal Directional Drilling Technologies.

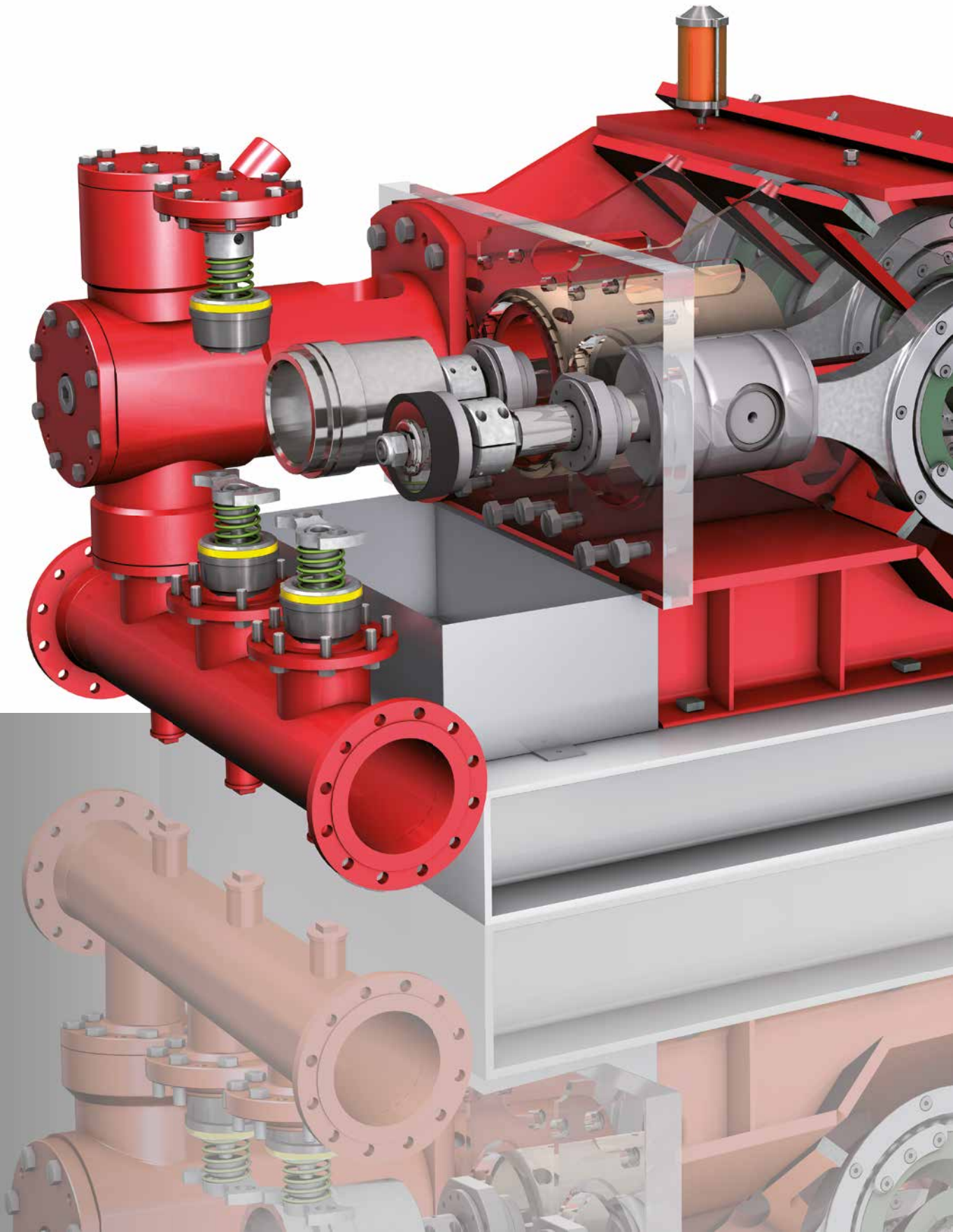
Competence, experience and technical know-how enable us to provide the best possible service and spare parts.

 **Prime-GPT** ... a division of **PRIME DRILLING®**
German Pump Technology



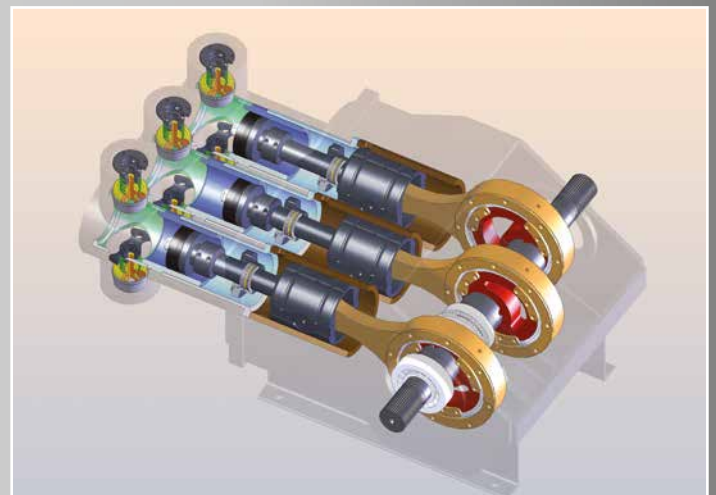
*To be successful, you have to have your heart in your business,
and your business in your heart*

by: Thomas Watson, Sr.





Content	Page
About us	2 - 3
Content list	5
X-Pump Units	6 - 11
PD X-1.000 HDD, PD X-2.000 HDD, PD X-3.000 HDD	
Severall Pump Units	12 - 13
Spare Parts Piston Pumps	14 - 23
Liners, Valves, Pistons, Rubber	
Centrifugal Pumps	
Prime-GPT 250 Centrifugal Pump	26 - 27
Spare Parts Centrifugal Pump GPT250	28 - 29
FLOMAX Pumps	30 - 31
Mixing Units	32 - 33
PD M-1.000 E, PD M-2.000 E, PD M-3.000 E	
Spare Parts Mixing Units	34
Accessories Drilling Fluid Systems	35
Recycling Units	36 - 37
PD R-1.000 E, PD R-2.000 E, PD-R 3.000 E	
Spare Parts Recycling Units	38 - 39
Service and Support	40 - 41



X-Pump Units

PPD X-1.000 HDD, PD X-2.000 HDD, PD X-3.000 HDD

The X-series pump developed by **PRIME DRILLING®** and **Prime-GPT** impresses with its robust and low-wear design. The 7-fold bearing mounted drive shaft, which is equipped with 3 eccentric wheels, replaces the conventional crankshaft. Due to the revolution of these shafts and their maximum 255 rotations per minute operational wear is reduced to a minimum.

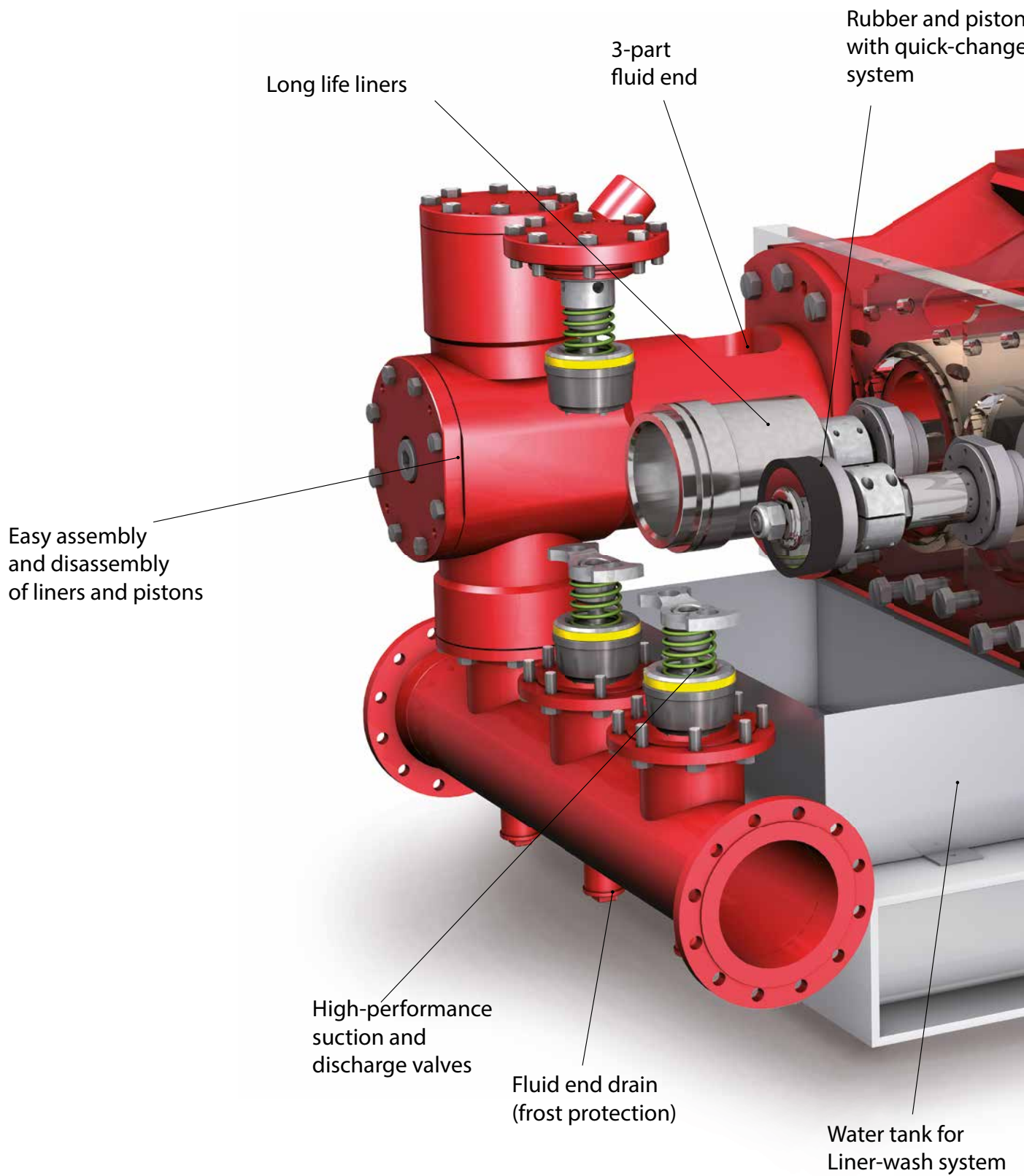
The use of most modern hydraulic components enable continuous control of the shaft speed and the thus generated linear speed of pistons or rather the flow rate of the drilling fluid by the speed of the hydraulic motor. The pump has a compact design and is installed into a silenced 20 ft. container. The integrated skid system allows to pull the pump out of the container fast and easily for service and maintenance. The container is designed as such to enable fast and easy transport via a twist-lock system.

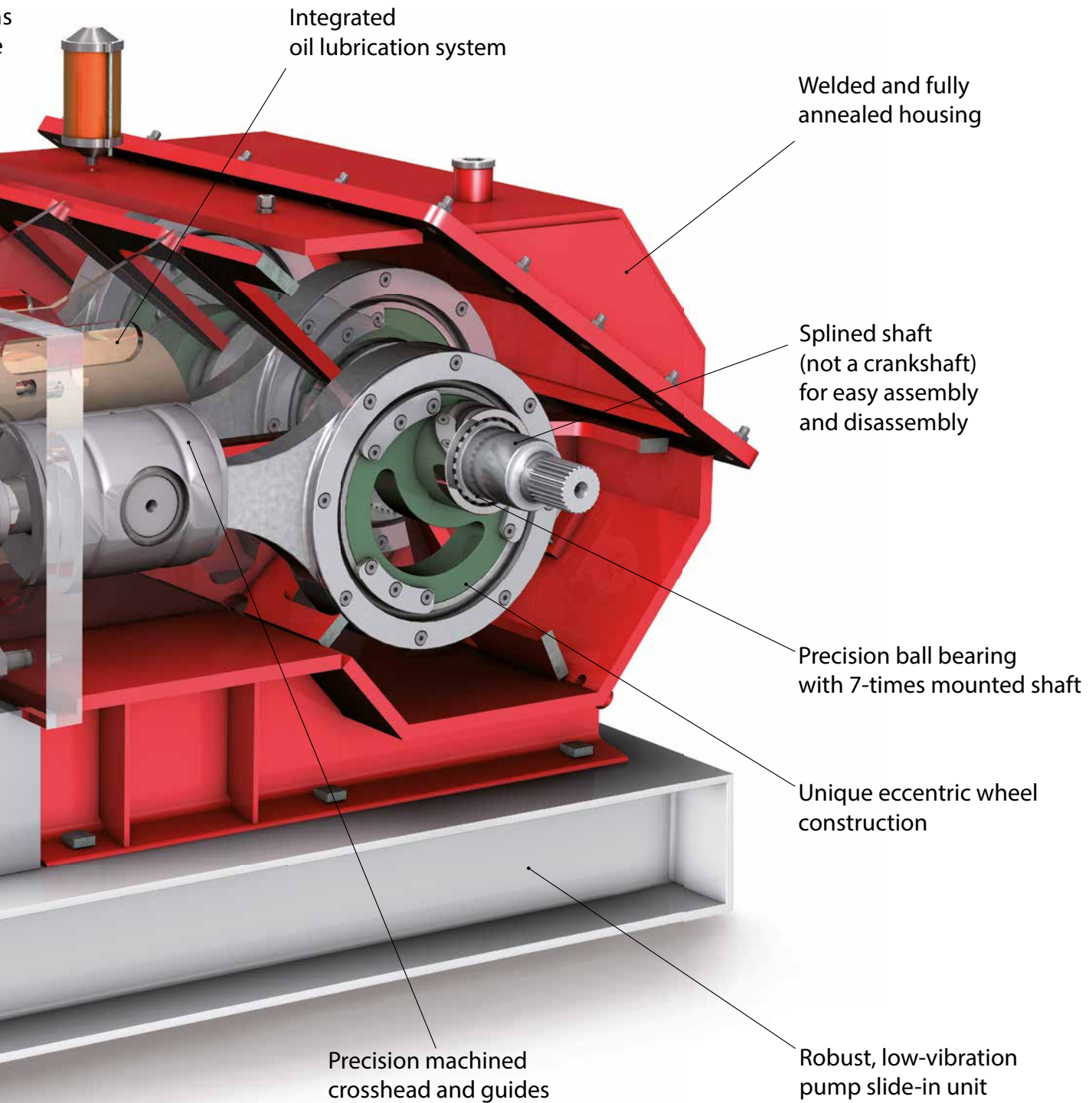
Part No.	Power rating /motor	Speed max.	Volume rate max.	Pressure max.	Container size
PD X-1.000 0,8 HDD	130 kW	150 rpm	834 l/min	371 bar	20 ft.
PD X-1.000 1,1 HDD	180 kW	200 rpm	1,112 l/min	400 bar	20 ft.
PD X-1.000 1,4 HDD	240 kW	255 rpm	1,418 l/min	400 bar	20 ft.
PD X-2.000 1,6 HDD	280 kW	155 rpm	1,613 l/min	346 bar	20 ft.
PD X-2.000 2,1 HDD	330 kW	200 rpm	2,081 l/min	350 bar	20 ft.
PD X-2.000 2,4 HDD	380 kW	235 rpm	2,445 l/min	550 bar	20 ft.
PD X-3.000 2,7 HDD	470 kW	180 rpm	2,737 l/min	300 bar	20 ft.
PD X-3.000 3,0 HDD	520 kW	200 rpm	3,041 l/min	300 bar	20 ft.
PD X-3.000 3,5 HDD	570 kW	230 rpm	3,497 l/min	300 bar	20 ft.





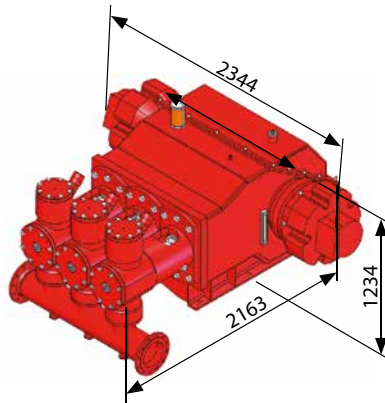
X-Pump Units





X-3.000 HDD

Stroke: 7"



PD X-3.000 · 2,7 LP · 330 kW

Ø	60 rpm	90 rpm	120 rpm	150 rpm	180 rpm
7.5 in	912 lpm	1,368 lpm	1,824 lpm	2,280 lpm	2,737 lpm
	128 bar	85 bar	64 bar	51 bar	43 bar
7.0 in	795 lpm	1,192 lpm	1,589 lpm	1,987 lpm	2,384 lpm
	147 bar	98 bar	73 bar	59 bar	49 bar
6.5 in	685 lpm	1,028 lpm	1,370 lpm	1,713 lpm	2,055 lpm
	170 bar	113 bar	85 bar	68 bar	57 bar
6.0 in	584 lpm	876 lpm	1,168 lpm	1,460 lpm	1,751 lpm
	200 bar	133 bar	100 bar	80 bar	67 bar
5.5 in	491 lpm	736 lpm	981 lpm	1,226 lpm	1,472 lpm
	237 bar	158 bar	119 bar	95 bar	79 bar

PD X-3.000 · 2,7 HP · 470 kW

Ø	60 rpm	90 rpm	120 rpm	150 rpm	180 rpm
7.5 in	912 lpm	1,368 lpm	1,824 lpm	2,280 lpm	2,737 lpm
	182 bar	121 bar	91 bar	73 bar	61 bar
7.0 in	795 lpm	1,192 lpm	1,589 lpm	1,987 lpm	2,384 lpm
	209 bar	139 bar	104 bar	84 bar	70 bar
6.5 in	685 lpm	1,028 lpm	1,370 lpm	1,713 lpm	2,055 lpm
	242 bar	161 bar	121 bar	97 bar	81 bar
6.0 in	584 lpm	876 lpm	1,168 lpm	1,460 lpm	1,751 lpm
	284 bar	189 bar	142 bar	114 bar	95 bar
5.5 in	491 lpm	736 lpm	981 lpm	1,226 lpm	1,472 lpm
	300 bar	225 bar	169 bar	135 bar	113 bar

PD X-3.000 · 3,0 LP · 330 kW

Ø	60 rpm	95 rpm	130 rpm	165 rpm	200 rpm
7.5 in	912 lpm	1,444 lpm	1,976 lpm	2,509 lpm	3,041 lpm
	128 bar	81 bar	59 bar	46 bar	38 bar
7.0 in	795 lpm	1,258 lpm	1,722 lpm	2,185 lpm	2,649 lpm
	147 bar	93 bar	68 bar	53 bar	44 bar
6.5 in	685 lpm	1,085 lpm	1,485 lpm	1,884 lpm	2,284 lpm
	170 bar	107 bar	78 bar	62 bar	51 bar
6.0 in	584 lpm	924 lpm	1,265 lpm	1,605 lpm	1,946 lpm
	200 bar	126 bar	92 bar	73 bar	60 bar
5.5 in	491 lpm	777 lpm	1,063 lpm	1,349 lpm	1,635 lpm
	237 bar	150 bar	110 bar	86 bar	71 bar

PD X-3.000 · 3,0 HP · 470 kW

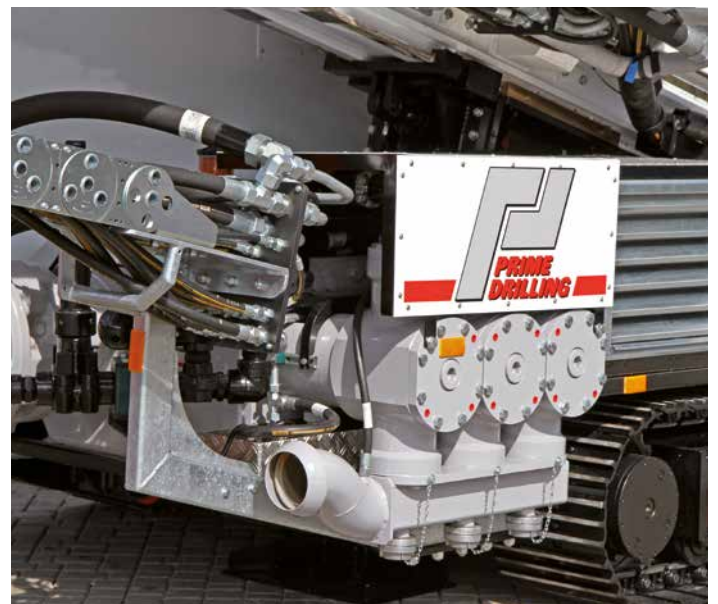
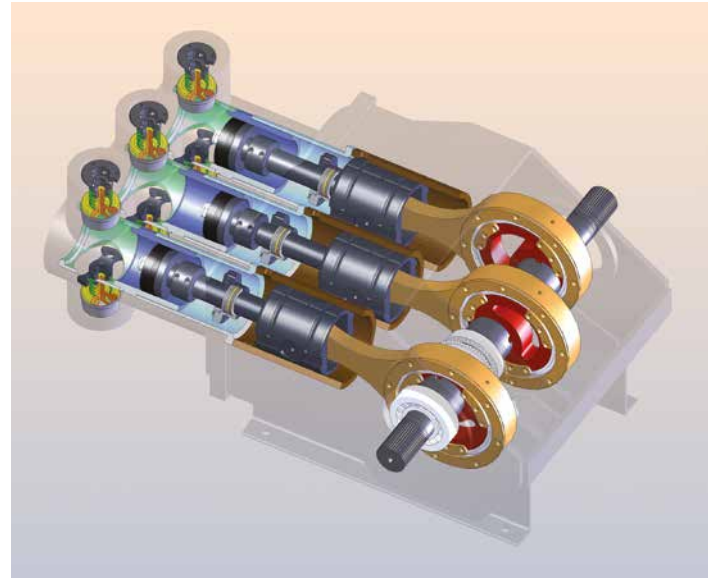
Ø	60 rpm	95 rpm	130 rpm	165 rpm	200 rpm
7.5 in	912 lpm	1,444 lpm	1,976 lpm	2,509 lpm	3,041 lpm
	182 bar	115 bar	84 bar	66 bar	55 bar
7.0 in	795 lpm	1,258 lpm	1,722 lpm	2,185 lpm	2,649 lpm
	209 bar	132 bar	96 bar	76 bar	63 bar
6.5 in	685 lpm	1,085 lpm	1,485 lpm	1,884 lpm	2,284 lpm
	242 bar	153 bar	112 bar	88 bar	73 bar
6.0 in	584 lpm	924 lpm	1,265 lpm	1,605 lpm	1,946 lpm
	284 bar	179 bar	131 bar	103 bar	85 bar
5.5 in	491 lpm	777 lpm	1,063 lpm	1,349 lpm	1,635 lpm
	300 bar	214 bar	156 bar	123 bar	101 bar

PD X-3.000 · 3,5 LP · 390 kW

Ø	70 rpm	110 rpm	150 rpm	190 rpm	230 rpm
7.5 in	1,064 lpm	1,672 lpm	2,280 lpm	2,889 lpm	3,497 lpm
	129 bar	82 bar	60 bar	48 bar	39 bar
7.0 in	927 lpm	1,457 lpm	1,987 lpm	2,516 lpm	3,046 lpm
	148 bar	94 bar	69 bar	55 bar	45 bar
6.5 in	799 lpm	1,256 lpm	1,713 lpm	2,170 lpm	2,626 lpm
	172 bar	110 bar	80 bar	63 bar	52 bar
6.0 in	681 lpm	1,070 lpm	1,460 lpm	1,849 lpm	2,238 lpm
	202 bar	129 bar	94 bar	74 bar	62 bar
5.5 in	572 lpm	899 lpm	1,226 lpm	1,553 lpm	1,880 lpm
	241 bar	153 bar	112 bar	89 bar	73 bar

PD X-3.000 · 3,5 HP · 570 kW

Ø	70 rpm	110 rpm	150 rpm	190 rpm	230 rpm
7.5 in	1,064 lpm	1,672 lpm	2,280 lpm	2,889 lpm	3,497 lpm
	189 bar	120 bar	88 bar	70 bar	58 bar
7.0 in	927 lpm	1,457 lpm	1,987 lpm	2,516 lpm	3,046 lpm
	217 bar	138 bar	101 bar	80 bar	66 bar
6.5 in	799 lpm	1,256 lpm	1,713 lpm	2,170 lpm	2,626 lpm
	252 bar	160 bar	117 bar	93 bar	77 bar
6.0 in	681 lpm	1,070 lpm	1,460 lpm	1,849 lpm	2,238 lpm
	295 bar	188 bar	138 bar	109 bar	90 bar
5.5 in	572 lpm	899 lpm	1,226 lpm	1,553 lpm	1,880 lpm
	300 bar	224 bar	164 bar	130 bar	107 bar



Several Pump Units

In the Horizontal Directional Drilling Industry, the X-Pump is a well-known phenomenon, but we also understand customers who need a pump unit with a pump from another manufacturer.

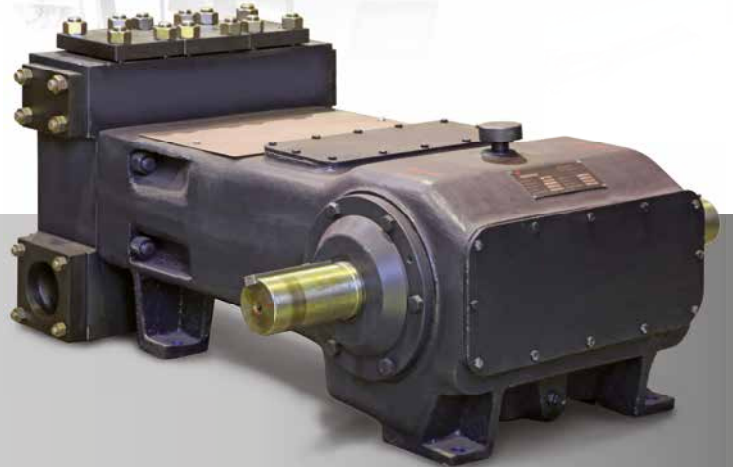
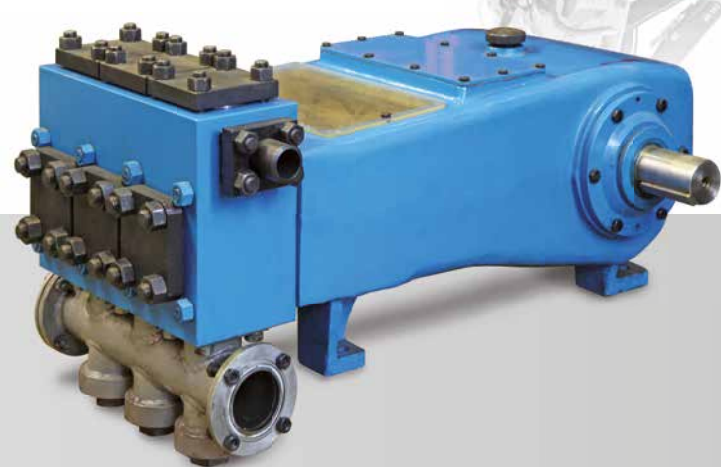
The discharge pressure of the X-Pump is until now limited to 120 bar. For the vertical drilling industry this pressure value is not sufficient.

Therefore **Prime-GPT** also supplies pump units based on pumps from other manufacturers.

We have built pump units based on FMC and Weatherford pumps, but other brands such as Kerr and Gardner Denver are also suitable for your pump unit.

Please let **Prime-GPT** advise you!





Spare Parts Piston Pumps

Prime-GPT stocks thousands of spare parts in Wenden, Germany. Standard in stock we have liners, pistons and valves for all well-known pumps used in the drilling industry. On the rare occasion we do not have the parts in stock or even when the pump is obsolete we always find a solution to supply you the requested spare parts.

For our own X-Pump we manufacture spare parts ourselves. From FMC, Weatherford, Kerr, Gardner Denver and other brands, **Prime-GPT** stocks the most important spare parts. All other spare parts are purchased directly from the pump manufacturers.





Liners

Ceramic Liners

The majority of the ceramic liners manufactured by **Prime-GPT** are of a two-part design. The inner sleeve is produced from either zirconia (ZrO₃) or alumina (Al₂O₃). The performance of Alumina in terms of service life far exceeds that of traditional chrome liners. Zirconia has proven to have better impact strength, is harder, and can be honed to a finer surface finish than alumina.

The outer casing is produced from premium steel or on customer's request even from stainless steel.

X-Pump Liners

Pump	Size		Material	Part No.
	Ø Inch	Ø mm		
X-1.000	4"	101.60	Chrome	GPT-PD-1000-06-0103
	4 ½"	114.30	Chrome	GPT-PD-1000-06-0104
	5"	127.00	Chrome	GPT-PD-1000-06-0105
	5 ½"	139.70	Chrome	GPT-PD-1000-06-0102
	6"	152.40	Chrome	GPT-PD-1000-06-0040
X-2.000	5"	127.00	Chrome	GPT-PD-2000-06-0132
	5 ½"	139.70	Chrome	GPT-PD-2000-06-0133
	6"	152.40	Chrome	GPT-PD-2000-06-0134
	6 ½"	165.10	Chrome	GPT-PD-2000-06-0135
X-3.000	7"	177.80	Chrome	GPT-PD-2000-06-0029/1
	5 ½"	139.70	Chrome	GPT-PD-3000-06-0169
	6"	152.40	Chrome	GPT-PD-3000-06-0152
	6 ½"	165.10	Chrome	GPT-PD-3000-06-0170
	7"	177.80	Chrome	GPT-PD-3000-06-0160
	7 ½"	190.50	Chrome	GPT-PD-3000-06-0100

Chrome Liners

Our chrome liners are produced from premium steel with chrome-plated bores.

All bores are honed, plated, and honed again to deliver a superior surface finish. This surface finish is also known as „mirror finish“. Extremely smooth bores ensure extended life of your piston rubbers*.

* depends on solids content of the drilling fluid.



FMC Liners

Pump	Size		Material	Part No.
	Ø Inch	Ø mm		
A0411	1 ⅜"	34.93	Ceramic	GPT-1249654
A0413	1 ⅝"	41.28	Ceramic	GPT-1241364
E0413	1 ⅝"	41.28	Ceramic	GPT-1241364
L0618HV	2 ¼"	57.15	Ceramic	GPT-1272060
L0918	2 ¼"	57.15	Ceramic	GPT-1272060
L1122D	2 ¾"	69.85	Ceramic	GPT-1267586
L1618	2 ¾"	69.85	Ceramic	GPT-3268979
L1622HV	2 ¾"	69.85	Ceramic	GPT-3268650
M1224	3"	76.20	Ceramic or Chrome	GPT-552103
M1432	4"	101.60	Ceramic or Chrome	GPT-P514674
M1632 / Q1632	4"	101.60	Ceramic or Chrome	GPT-514681
M1636 / Q1636	4 ½"	114.30	Ceramic or Chrome	GPT-514669



Additional information may be found at: www.prime-gpt.de

Weatherford Liners

Pump	Size		Material	Part No.
	Ø Inch	Ø mm		
2100 HDD	4"	101.60	Chrome	GPT-303348
	4 ¼"	107.95	Chrome	GPT-L-2100-4250-CHR
2165 HDD	4 ½"	114.30	Chrome	GPT-113866
	4 ¾"	120.65	Chrome	GPT-889823
2350 HDD	5"	127.00	Chrome	GPT-203166
	6"	152.40	Chrome	GPT-823930



Kerr Liners

Pump	Size		Material	Part No.
	Ø Inch	Ø mm		
KT3350PT	3 ½"	88.90	Chrome	GPT-KT-285-350-CH
	3 ½"	88.90	Ceramic	GPT-KT-285-350-CER
KA3500PT	3 ½"	88.90	Chrome	GPT-KA-285-350-CH
	3 ½"	88.90	Ceramic	GPT-KA-285-350-CER



* Liners for all other KERR HDD pump models available on request

Gardner Denver Liners

Pump	Size		Material	Part No.
	Ø Inch	Ø mm		
TEED	3 ½"	88.90	Chrome	GPT-TEED-350
THE	5"	127.00	Chrome	GPT-FG45650

* Liners on this list are in stock. All other Gardner Denver liner versions are available on request



Ellis Williams Liners

Pump	Size		Material	Part No.
	Ø Inch	Ø mm		
EW 440/446	6"	152.40	Chrome	GPT-L-446-600-O-CH

* Liners for EW 440 / 446 are available in different versions



Myers Apex Liners (no picture)

Pump	Size		Material	Part No.
	Ø Inch	Ø mm		
SC-30	1 ¾"	44.45	Ceramic	GPT-7207-0214-00A
SC-45	1 ¾"	44.45	Ceramic	GPT-7206-0405-00A
SC-45L	2 ¼"	57.15	Chrome	GPT-7206-0406-00A
SC-65	2 ¼"	57.15	Ceramic	GPT-7203-0702-00A
SC-65L	3"	76.20	Ceramic	GPT-7203-0658-00A
	3"	76.20	Chrome	GPT-7203-0658-1-00A
SC-115L	3"	76.20	Ceramic	GPT-7203-0658-00A
	3"	76.20	Chrome	GPT-7203-0658-1-00A
SC-170L	4"	101.60	Ceramic	GPT-7204-1106-1-00K
	4"	101.60	Chrome	GPT-7204-1106-00K
SC-170DD	4"	101.60	Ceramic	GPT-7204-1106-1-00K
	4"	101.60	Chrome	GPT-7204-1106-00K
SC-230	4 ½"	114.30	Ceramic	GPT-7201-0729-1-00K
	4 ½"	114.30	Chrome	GPT-7201-0729-00K
SC-300L	4 ½"	114.30	Chrome	GPT-7204-1176-00K

Valves

AR Valves

Prime-GPT supplies high performance abrasion resistant valves for all known pumps in the industry. Ball valves and disc valves are also in our delivery program. We stock the most common valves in Wenden, Germany.

Separate valve parts like valve seals, cages, bodies and springs are also available. Please let us know if you need valves or valve parts for your pump. We keep your drilling fluid moving!

Valve Cage

AISI 316-Stainless Steel (option)

DIN 1.4401 /1.4436

Surface Treatment: Pickled & passivated.

AISI 316 is an austenitic stainless steel with an increased molybdenum content which increases its resistance to corrosion when compared to other 300 series alloys. It will resist scaling at temperatures up to 1600 F (871 °C) and maintains good mechanical properties and creep strength at high temperatures. This material is widely used in the industry. It was initially designed for paper mill machinery but has been used in marine environments and a wide variety of general industrial components.

Valve Seal

Material: Polyurethane

In situations where temperatures range from -65 F to +200 F a polyurethane seal is the most economical and best design choice. Besides its low cost, urethanes are tough, abrasion/wear resistant, and able to take shock loads better than most elastomers.

Valve Body and Seat

AISI 410 - Stainless Steel (option), DIN 1.4006

Surface Treatment: Precipitation hardened; pickled & passivated.

AISI 410 is a basic martensitic stainless which will attain high mechanical properties after heat treatment. It has good impact strength, corrosion and scaling resistance up to 1200 F (649°C). This material is widely used in steam and gas turbine blades and buckets, bushings, and impact resistant machinery components. **Prime-GPT** also supplies valve bodies and seats in 17-4,17-7, 316, carburized 8620 alloy steel, and other materials upon request.

Valve Spring

AISI 17-4PH - Stainless Steel (option), DIN 1.4568

Surface Treatment: Precipitation hardened; pickled & passivated.

AISI 17-4PH is a traditional valve spring material proven in millions of applications. We also supply inconel and other proprietary materials.

AR Valve Assemblies X-Pump

Pump	Suction	Discharge	Part No.
X-1.000	.	.	GPT-PD-V01-01-001
X-2.000	.	.	GPT-PD-V02-01-001
X-3.000*	.	.	GPT-PD-V03-01-001
	.	.	GPT-PD-V03-02-001

* X-3000 Valves available with cage (V03-01) and without cage (V03-02)

AR Valve Assemblies FMC

Pump	Suction	Discharge	Part No.
M1224	.		GPT-5271408
		.	GPT-5271407
M1432DI HDD	.		GPT-P510664
		.	GPT-P510663
M16 / Q16	.		GPT-P508799
		.	GPT-P508800

* M16/Q16 Valves also available with part.no. GPT-0040-AR-011A-03 (Discharge) & TP-0040-AR-011A-06 (Suction)

Valve Kits FMC

Pump	Suction	Discharge	Part No.
A0413C HDD	.	.	GPT-P501507
E0413C HDD	.	.	GPT-P503038
L0618COMP HDD	.	.	GPT-P503042
L0616HV HDD	.	.	GPT-P503042
L0918HD HDD	.	.	GPT-P503042
L0918HD-HV HDD	.	.	GPT-P534391
L1122D HDD	.	.	GPT-P501868
L1622HV HDD	.	.	GPT-P508619
M1432DI HDD	.	.	GPT-P515061

Valve Kits Weatherford

Pump	Suction	Discharge	Part No.
2100 HDD	.	.	GPT-804685
2165 HDD	.	.	GPT-804685
2350 HDD	.	.	GPT-782486



Piston Assemblies

Prime-GPT supplies all types and sizes of piston assemblies. From the small 1 5/8" FMC packing kit up to the 7 1/2" pistons for the X-3000 pump are standard in stock. Different types of pistons like HSN/Kevlar cups, wedge style, bull nose style, bonded and assembled pistons from urethane and rubber are used in the different types of pumps. Separate parts for piston assemblies like piston rubbers, piston hubs, snap rings and retainer plates are available at **TRINITY-HDD**.

Piston Hubs

AISI 5140/5140H - Alloy Steel/Chromium Steel DIN 1.7035/1.7006

AISI 5140 (H) is a low chromium alloy steel of the deep hardening type. This steel has been widely used in automotive drive units.

Snap Rings

AISI 9260H - Alloy Steel /Spring Steel DIN 1.0909

Surface Treatment: Zn composite galvanized by hot dipping.

AISI 9260H is an oil-hardening type of spring steel and tool steel recommended for repeated and severe impact service. This steel is widely used for heavy duty, shock resistant machine parts.

Retainer Plates

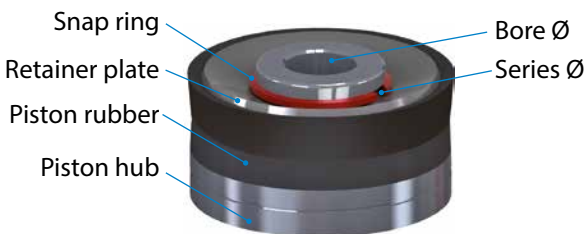
AISI11010 - Low Carbon Steel DIN 1.1121

Surface Treatment: Zn composite galvanized by hot dipping.

AISI 1010 is a low-carbon steel having good formability and weldability properties. It is recommended for deep-drawing operations and for structural shapes and carburized parts. This material is widely used in bushings, clutch discs, flanges, and thrust washers.

High Quality Rubbers

Standard and strength enhanced piston rubbers are produced from our own molds. We offer high temperature and high-hydrogen sulfide piston rubbers which are purchased from carefully selected and qualified vendors.



GPT-PA-4001-K

Prime-GPT Pumps
PA = Piston Assembly
 Piston Size 4"
 Series (A, K, B, L) Ø
 Bore Ø
 1 = 1" A = 50.70 mm
 2 = 1 5/8" K = 63.50 mm
 3 = 42 mm B = 76.15 mm
 L = 95.27 mm

Example:

GTP-PA-4001-K Piston Assembly, 4", Series K, Bore 1"

Piston Assemblies

Series	Size		Bore		Part No.
	Ø Inch	Ø mm	Ø Inch	Ø mm	
A	3"	76.20	1"	25.40	GPT-PA-3001-A
A	3 1/2"	88.90	1"	25.40	GPT-PA-3501-A
K	3 1/2"	88.90	1"	25.40	GPT-PA-3501-K
K	3 1/2"	88.90	1 5/8"	41.28	GPT-PA-3502-K
K	3 3/4"	95.25	1"	25.40	GPT-PA-3751-K
A	4"	101.60	1"	25.40	GPT-PA-4001-A
K	4"	101.60	1"	25.40	GPT-PA-4001-K
K	4 1/4"	107.95	1"	25.40	GPT-PA-4251-K
A	4 1/2"	114.30	1"	25.40	GPT-PA-4501-A
B	4 1/2"	114.30	1"	25.40	GPT-PA-4501-B
K	4 1/2"	114.30	1"	25.40	GPT-PA-4501-K
K	4 3/4"	120.65	1"	25.40	GPT-PA-4751-K
K	4 3/4"	120.65	1 5/8"	41.28	GPT-PA-4752-K
A	5"	127.00	1"	25.40	GPT-PA-5001-A
B	5"	127.00	1"	25.40	GPT-PA-5001-B
B	5"	127.00	1 5/8"	41.28	GPT-PA-5002-B
B	5 1/2"	139.70	1"	25.40	GPT-PA-5501-B
B	5 1/2"	139.70	1 5/8"	41.28	GPT-PA-5502-B
B	5 1/2"	139.70		42.00	GPT-PA-5503-B
B	6"	152.40	1"	25.40	GPT-PA-6001-B
B	6"	152.40	1 5/8"	41.28	GPT-PA-6002-B
B	6"	152.40		42.00	GPT-PA-6003-B
B	6 1/2"	165.10	1"	25.40	GPT-PA-6501-B
L	6 1/2"	165.10	1"	25.40	GPT-PA-6501-L
L	6 1/2"	165.10	1 5/8"	41.28	GPT-PA-6502-L
B	7"	177.80	1"	25.40	GPT-PA-7001-B
L	7"	177.80	1"	25.40	GPT-PA-7001-L
L	7"	177.80	1 5/8"	41.28	GPT-PA-7002-L
B	7 1/4"	184.15	1"	25.40	GPT-PA-7251-B
B	7 1/2"	190.50	1"	25.40	GPT-PA-7501-B
L	7 1/2"	190.50	1"	25.40	GPT-PA-7501-L
L	7 1/2"	190.50	1 5/8"	41.28	GPT-PA-7502-L

Piston Assemblies X-Pump

Pump	Series	Size		Part No
		Ø Zoll	Ø mm	
X-1.000	K	4"	101.60	GPT-PA-400X-K
	K	4 1/2"	114.30	GPT-PA-450X-K
	B	5"	127.00	GPT-PA-500X-B
	B	5 1/2"	139.70	GPT-PA-550X-B
	B	6"	152.40	GPT-PA-600X-B
X-2.000	B	5"	127.00	GPT-PA-500X-B
	B	5 1/2"	139.70	GPT-PA-550X-B
	B	6"	152.40	GPT-PA-600X-B
	L	6 1/2"	165.10	GPT-PA-650X-L
	L	7"	177.80	GPT-PA-700X-L
X-3.000	B	5 1/2"	139.70	GPT-PA-550X-B
	B	6"	152.40	GPT-PA-600X-B
	L	6 1/2"	165.10	GPT-PA-650X-L
	L	7"	177.80	GPT-PA-700X-L
	L	7 1/2"	190.50	GPT-PA-750X-L

Piston Assemblies Weatherford

Pump	Size		Bore		Part No.
	Ø Inch	Ø mm	Ø Inch	Ø mm	
2100	4"	101.60	1"	25.40	GPT-728932
2165	5"	127.00	1"	25.40	GPT-884774
	5 1/2"	139.70	1"	25.40	GPT-728931
2350	6"	152.40		42.00	GPT-823933



Packing Kits FMC

Pump	Part No.
A0413C HDD	GPT-P502495
E0410C HDD	GPT-P503037
E0413C HDD	GPT-P507422
L0618COMP HDD	GPT-P537943
L0616HV HDD	GPT-P503041 / GPT-P513795 / GPT-P537943
L0918HD HDD	GPT-P503041 / GPT-P537943
L0918HD-HV HDD	GPT-P537943
L1122D HDD	GPT-P501870
L1622HV HDD	GPT-P508620
M1224	GPT-PA-3001-A
M1432DI HDD	GPT-P514941
M16 / Q16	GPT-PA-4001-K / GPT-PA-4501-K



Rubber Kits

Prime-GPT supplies all types and sizes of rubber kits. The small 1 5/8" FMC packing kit up to the 7 1/2" pistons for the X-3000 pump are standard in stock. Different types of pistons like HSN/Kevlar cups, wedge style, bull nose style, bonded and assembled pistons from urethane and rubber are used in the different types of pumps. Separate parts for piston assemblies like piston rubbers, piston hubs, snap rings and retainer plates are available at **Prime-GPT**.

Snap Rings

AISI 9260H - Alloy Steel /Spring Steel DIN 1.0909

Surface Treatment: Zn composite galvanized by hot dipping.

AISI 9260H is an oil-hardening type of spring steel and tool steel recommended for repeated and severe impact service. This steel is widely used for heavy duty, shock resistant machine parts.

Retrainer Plates

AIS11010 - Low Carbon Steel DIN 1.1121

Surface Treatment: Zn composite galvanized by hot dipping.

AISI 1010 is a low-carbon steel having good formability and weldability properties. It is recommended for deep-drawing operations and for structural shapes and carburized parts. This material is widely used in bushings, clutch discs, flanges, and thrust washers.

High Quality Rubbers

Standard and strength enhanced piston rubbers are produced from our own molds. We offer high temperature and high-hydrogen sulfide piston rubbers which are purchased from carefully selected and qualified vendors.

Standard piston rubbers

are produced from acrylonitrile butadiene rubber which is suitable for ordinary drilling environments. The max. working temperature is 120°C/248 F. The max. pressure rating is 25 Mpa/3600 psi. Customers can expect good wear and chemical/ corrosion resistance. These rubbers are not recommended for oil based or high sediment concentration slurries.

Strength Enhanced piston rubbers

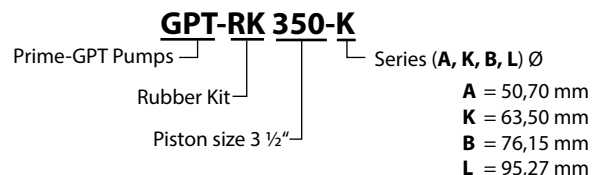
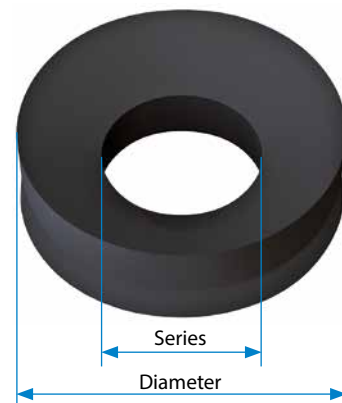
are produced from high-intensity acrylonitrile butadiene rubber material which is supplied by Dupont® and Zeon. These pistons display excellent oil and wear resistance and super compressive strength. Our strength enhanced pistons are ideal for oil-based mud and higher silt/sand content.

The life expectancy of standard piston rubber will be significantly shorter than the strength enhanced piston rubber in the same application.

Rubber Kits (incl. retainer plate & snap ring)

Series	Size		Part No.
	Ø Inch	Ø mm	
A	3"	76.20	GPT-RK300-A
A	3 1/2"	88.90	GPT-RK350-A
K	3 1/2"	88.90	GPT-RK350-K
K	3 3/4"	95.25	GPT-RK375-K
A	4"	101.60	GPT-RK400-A
K	4"	101.60	GPT-RK400-K
K	4 1/4"	107.95	GPT-RK425-K
A	4 1/2"	114.30	GPT-RK450-A
B	4 1/2"	114.30	GPT-RK450-B
K	4 1/2"	114.30	GPT-RK450-K
K	4 3/4"	120.65	GPT-RK475-K
A	5"	127.00	GPT-RK500-A
B	5"	127.00	GPT-RK500-B
B	5 1/2"	139.70	GPT-RK550-B
B	6"	152.40	GPT-RK600-B
B	6 1/2"	165.10	GPT-RK650-B
L	6 1/2"	165.10	GPT-RK650-L
B	7"	177.80	GPT-RK700-B
L	7"	177.80	GPT-RK700-L
B	7 1/4"	184.15	GPT-RK725-B
B	7 1/2"	190.50	GPT-RK750-B
L	7 1/2"	190.50	GPT-RK750-L

Rubber Kits are available for single acting and double acting pumps



Example:

GPT-RK350-K Rubber Kit, 3 1/2", Series K







Centrifugal Pumps

Centrifugal pumps are an important player in your drilling fluid system. **Prime-GPT** knows this and has huge experience in finding solutions for your mud system and the pumps which are running these systems.

Prime-GPT is distributor for MCM O'Drill and MP Pumps (Flomax). These pumps are both American-made quality pumps.

The **Prime-GPT 250** and **FLOMAX 15** are pumps which are used in mixing units and recycling units for the Horizontal Directional Drilling Industry. These units are there for mixing bentonite and polymers into a drilling fluid for stabilizing a bore hole and for processing your drilling fluid in a recycling unit to separate the cuttings from the mud.

We stock spare parts up to complete pumps in Wenden, Germany.



Prime-GPT 250

The **Prime-GPT 250** centrifugal pump is an American-made quality pump.

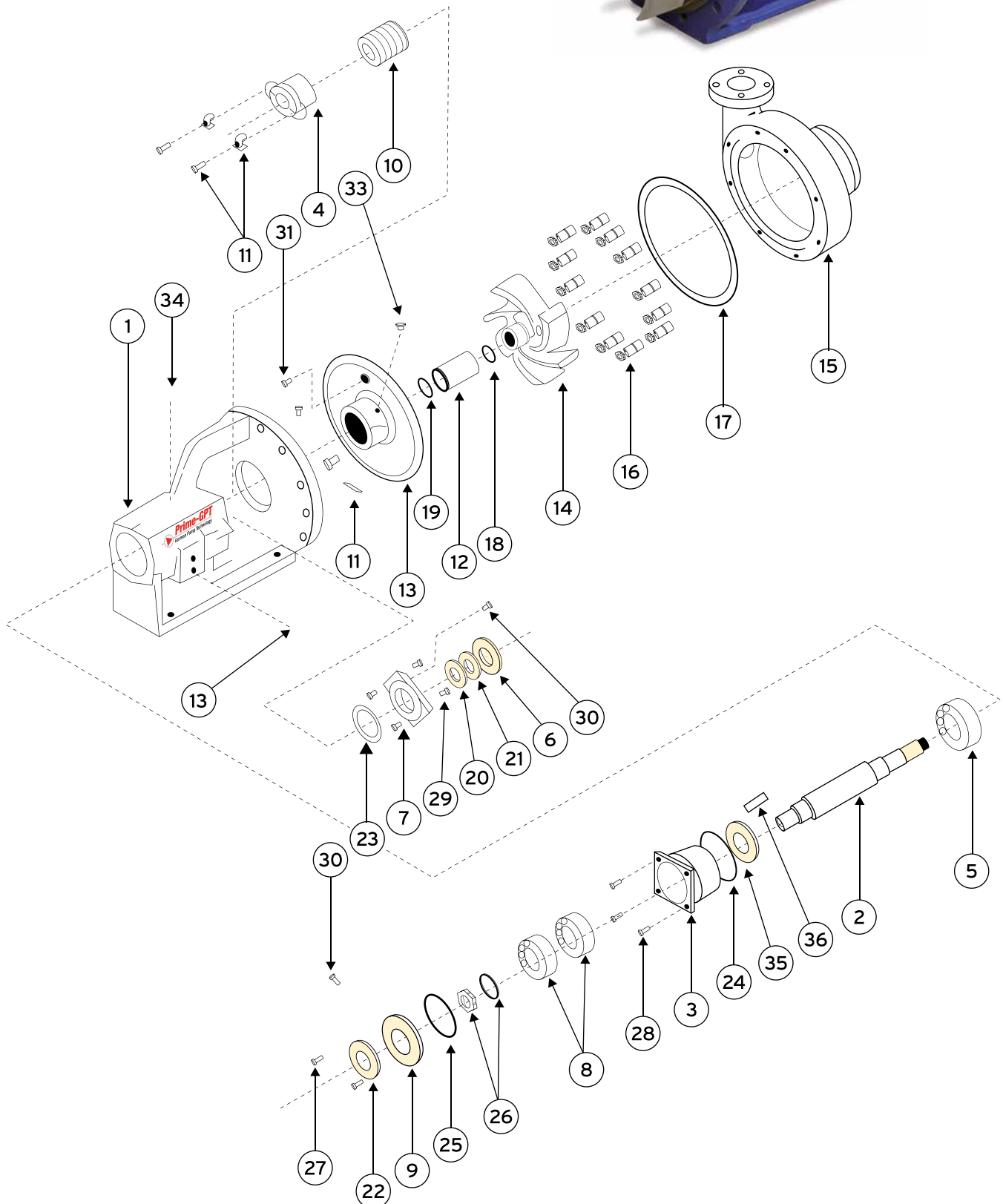
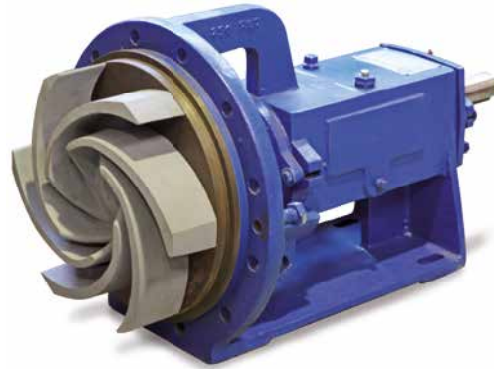
The GPT 250 pump is a specially designed booster pump for mixing units and as transfer pump for recycling units used in the Horizontal Directional Drilling industry. Also in other areas, where fluids have to be transported from A to B, is the GPT 250 is your ideal partner.

Prime-GPT has the GPT 250 and most of the spare parts, including housing and impellers, always on the shelf in Wenden. **Prime-GPT** also supplies parts for the 178 HDD.

We have great experience in building the **Prime-GPT 250** as a pump skid module. This is ideal as a replacement or additional pump for your jobsite.



Spare Parts Prime-GPT 250 Centrifugal Pump



Prime-GPT 250 Spare Part List

Item	Description	Qty.	Prime-GPT Part No.	Mission P/N	Halco	Harrisburg
1	250 Pedestal	1	GPT-P25PED	20618-12-1	H20618-12-1	1-250-PED
2	250 Shaft	1	GPT-P25SHFT	20612-02-33	H20612-02-33	7-250-416SS
3	250 Outboard Bearing Housing	1	GPT-P25OBBH	20624-01-01	H20624-01-01	4C-250-BH
4	250 Packing Gland	1	GPT-P25PG	20622A	H20622A	9-250-GPA
5	250 Inboard Bearing SKF	1	GPT-P25IBBRG	20615-1	H20615-1	4B-250-BI
6	250 Slinger Ring Water	1	GPT-P25SRW	22210-1A	H22210-1A	23-250-SRW-U
7	250 Inboard Bearing Cover	1	GPT-P25IBBC	20626A	H20626A	2B-250-BC
8	250 Outboard Bearing SKF	2	GPT-P25OBBRG	20616-1	H20616-1	4A-250-BO
9	250 Outboard Bearing Cover	1	GPT-P25OBBC	20617A	H20617A	2A-250-BC
10	250 Graphite Packing	1	GPT-P25PMSG	8264-24-OBA	H8264-24-OBA	8A-250-PMSG
	250 King Packing	1	GPT-P25PMSK	8474-24-1A	H8474-24-1A	8C-250-PMSK
	250 Teflon Packing	1	GPT-P25PMST	8264-24-7A	H8264-24-7A	8D-250-PMST
	250 Mechanical Seal-Tung, Carb	1	GPT-P25MS/TT	22451	H22451	34A-250-MSI
11	250 Gland Bolt Assembly	2	GPT-P25GABA	3701A	H3701A	10-250-GABA
12	250 Shaft Sleeve, Ceramic	1	GPT-P25SHSLVC	20613-21G-7A	H20613-21G-7A	7A-250-SSC
13	250 Stuffing Box F/Packing	1	GPT-P25SB/PK	20614-01-30	H20614-01-30	11-250-SBPS
	250 Stuffing Box F/Mech: Seal	1	GPT-P25SB/MS	22223-01-30A	H22223-01-30A	11C-250-SBMSS
14	250-2 x 3 x 13 Impeller	1	GPT-P25D233MRXXX	19204-XX-30	H19204-XX-30	122523IXXX
	250-3 x 4 x 13 Impeller	1	GPT-P25D343MRXXX	19206-XX-30	H19206-XX-30	122534IXXX
	250-4 x 5 x 14 Impeller	1	GPT-P25D454MRXXX	19224-XX30	H19224-XX-30	122545IXXX
	250-5 x 6 x 11 Impeller	1	GPT-P25D561MRXXX	19121-XX-30	H19121-XX-30	122556IXXX
	250-5 x 6 x 14 Impeller	1	GPT-P25D564MRXXX	19121-XX-30	H19121-XX-30	122564XXX
	250-6 x 8 x 11 Impeller	1	GPT-P25D681MRXXX	19116-XX-30	H19116-XX-30	1225681XXX
	250-6 x 8 x 14 Impeller	1	GPT-P25D684MRXXX	19116-XX-30	H19121-XX-30	122568IXXX
15	250-2 x 3 x 13 Housing Assembly	1	GPT-P25D233H	19203-01-30A	H19203-01-30A	142523HAS
	250-3 x 4 x 13 Housing Assembly	1	GPT-P25D343H	19205-01-30A	H19205-01-30A	142534HAS
	250-4 x 5 x 14 Housing Assembly	1	GPT-P25D454H	19222-01-30A	H19222-01-30A	N/A
	250-5 x 6 x 11 Housing Assembly	1	GPT-P25D561H	19122-01-30A	H19122-01-30A	1425561HAS-11
	250-5 x 6 x 14 Housing Assembly	1	GPT-P25D564H	19123-01-30A	H19123-01-30A	1425561HAS-14
	250-6 x 8 x 11 Housing Assembly	1	GPT-P25D681H	19763-01-30A	H19763-01-30A	N/A
	250-6 x 8 x 14 Housing Assembly	1	GPT-P25D684H	19117-01-30A	H19117-01-30A	142568HAS
16	250 Housing Stud W/ Nut	12	GPT-P25HSN	3862-76/3932-61	H3862-76/3932-61	15-250-HSN
17A	250 Fluid End Gasket Kit		GPT-P25FEGK	10399-46-1A	H10399-46-1A	31-250-FEGK
17	250 Housing Gasket	1	GPT-P25HG	10399-46-1	H10399-46-1	13C-250-HGA
18	250 Impeller Seal-O-ring	1	GPT-P25IMS	19110-72	H19110-72	12B250-ISOR
19	250 Shaft Sleeve Seal-O-ring	1	GPT-P25SSS	7496-236	H7496-236	7B-250-SSOR
20A	250 Oil Seal Kit		GPT-P25SK20619A		H20619A	33-250-GSK
20	250 Inboard Bearing Oil Seal	1	GPT-P25IBBOS	20619-01	H20619-01	5B-250-OGSI
21	250 Inboard Exclusion Seal	1	GPT-P25IBBES	20620-01	H0620-01	5C-250-SEXI
22	250 Outboard Bearing Oil Seal	1	GPT-P25OBBOS	20619-02	H20619-02	5A-250-OGSO
23A	250 Power End Gasket Kit		GPT-P25PEGK	20625A	H20625A	32-250-PEGK
23	250 Inboard Bearing Cover Gasket	1	GPT-P25IBBCG	20625	H20625	3A-250-BCG
24	250 Outbd. Brg. Hsg. Seal-O-ring	1	GPT-P25OBBHS	7496-253	H7496-253	4D-250-BHOR
25	250 Outbd. Brg. Cover Seal-O-ring	1	GPT-P25OBBCS	7496-26	H7496-26	3B-250-BCOR
26	250 Bearing Lock Nut Kit	1	GPT-P25BLNK	6123-4A	H6123-4A	4E-250-BBLNA

FLOMAX Pumps

If your mixing unit asks for a pump, Prime-GPT is your partner to help you out.

The Flomax pump serves the Horizontal Directional Drilling market primarily with the double seal, grease lubricated, self-priming, cast-iron pumps. All over the world several OEM's and distributors are serving the customers with advice, pumps and spare parts.

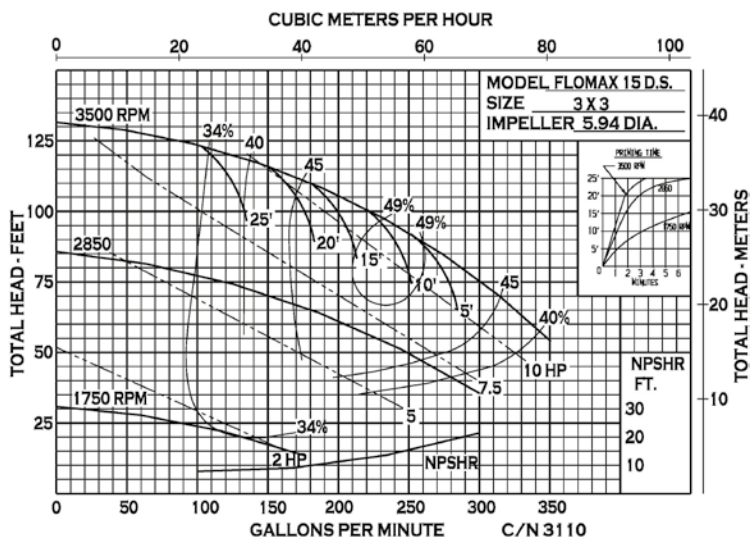
Prime-GPT is a preferred European distributor of Flomax pumps for the drilling industry. The Flomax pump serves dual purposes within the drilling fluid system. It both circulates the fluid to keep the drilling fluid in suspension as well as scavenging fluid to feed the triplex pump that goes to the drill head. Pumps which are often used as booster pump for mixing units in the Horizontal Directional Drilling industry are the Flomax 15 and Flomax 30.

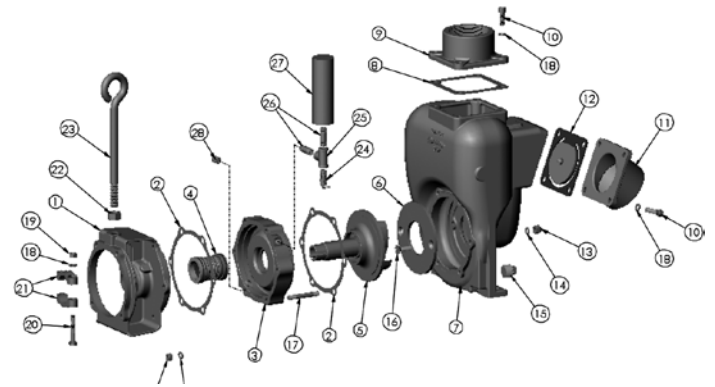
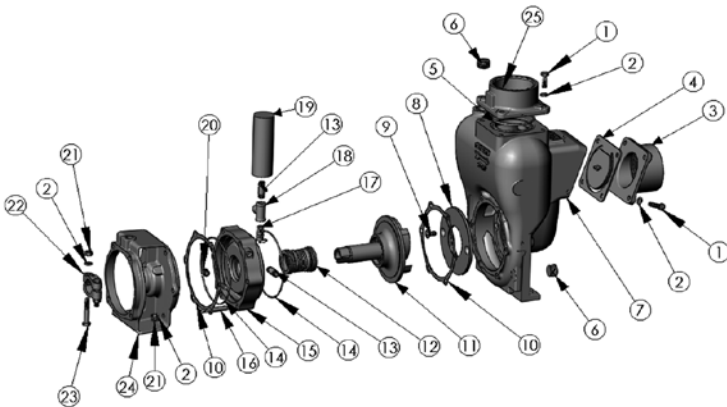
The basic principle of the grease lubrication is as follows. The zerk fitting is located in the seal chamber casting. Grease is pumped into the seal casting filing through the chamber and then upwards into the grease reservoir. When completely filled, a poppet valve will open and expunge grease as an indicator that the reservoir is filled. At the top of the reservoir is a spring which keeps pressure on the grease.

Mechanical energy of the working pump causes the grease to become liquid keeping the seal faces lubricated. The pressure in the seal chamber is greater than the working pressure of the pumpage disallowing the drilling fluid from being in contact with the seal faces. Popular pump packages include gasoline engine drive, electric standrad drive and hydraulic drives.

Prime-GPT supplies pumps and complete pump-packs based on your requirements. We also supply all the spare parts your Flomax pump needs.

Please ask **Prime-GPT** for a quotation or spare part support for your Flomax pump.





Flomax FM 15 GPT-31714

Item No.	Description	Qty.	Part No.
1	Cap Screw S.S, 3/8-16 x 1.13"	8	GPT-21291
2	Lock Washer, 3/8	20	GPT-21266
3	Flange, Suction, C.I.	1	GPT-22468
4	Flapper Assembly	1	GPT-23040*
5	O-Ring, Viton	1	GPT-37138*
6	SQ. HD. SK, 3/4" NPT	2	GPT-41481
7	Housing, C.I.	1	GPT-22351
8	Wear Plate, STL.	1	GPT-22244*
9	Flat HD. Screw S.S, 3/8-16 x 0.75	2	GPT-37115
10	Gasket, NI-2085	2	GPT-22240*
11	Impeller, Ø 5.5, Ductile	1	GPT-31880
12	Seal Assembly, T-31 D.S.	1	GPT-31713*
13	Pipe Nipple, 1/4" NPT	2	GPT-28635
14	O-Ring, Viton 5.737 I.D.	2	GPT-29715*
15	Adapter, C.I.	1	GPT-31406
16	Stud S.S, 3/8-16 x 2.89	6	GPT-31709
17	Relief Valve, 1/4" NPT	1	GPT-31733
18	Pipe Tee, 1/4" NPT	1	GPT-31734
19	Grease Reservoir, 1/4" NPT	1	GPT-31732*
20	Grease Fitting, 1/4" NPT	1	GPT-31735
21	Hex Nut, 3/8-16	8	GPT-21268
22	Clamp S.S, 1"	2	GPT-22356
23	Hex HD. Screw, 3/8-16 x 2.25"	2	GPT-21269
24	Adapter, C.I.	1	GPT-22348
25	Flange Discharge, C.I.	1	GPT-22471

* recommended replacement parts

Flomax FM 15 GPT-32029

Item No.	Description	Qty.	Part No.
1	Adapter, Cast Iron	1	GPT-22348
2	Gasket	2	GPT-22240*
3	Adapter, Double Mechanical Seal	1	GPT-31406
4	Double Mechanical Seal, SSC	1	GPT-31713*
5	Impeller, 5.94"	1	GPT-31408*
6	Wear Plate	1	GPT-22244*
7	Housing	1	GPT-22351
8	Gasket, Discharge	1	GPT-22358*
9	Flange, Discharge	1	GPT-22471
10	Cap Screw S.S, 3/8-16 x 1.13"	8	GPT-21291
11	Flange, Inlet	1	GPT-22468
12	Flapper Assembly	1	GPT-23040*
13	Acorn Nut, 3/8-16	2	GPT-21263*
14	Annular Gasket	2	GPT-21271*
15	Pipe Plug, 3/4" NPT	1	GPT-41481
16	Flat HD. Screw, 3/8-16 x 1.25"	2	GPT-21262*
17	Stud S.S, 3/8-16 x 2.76"	6	GPT-31709
18	Lock Washer, 3/8	16	GPT-21266
19	Hex Nut, 3/8-16	8	GPT-21268
20	Hex HD. Screw, 3/8-16 x 2.25"	2	GPT-21269
21	Clamp S.S, 1"	2	GPT-22356
22	Hex Nut, 5/8-11	1	GPT-22461
23	Lift Eye, 5/8-11	1	GPT-22460
24	Relief Valve, 1/4" NPT (125 PSI)	1	GPT-31733
25	Pipe Tee, 1/4" NPT	1	GPT-31734
26	Pipe Nipple, 1/4" NPT	2	GPT-28635
27	Grease Reservoir, 1/4" NPT	1	GPT-31732
28	Grease Fitting, 1/4" NPT	1	GPT-31735

* recommended replacement parts

Mixing Units

PD M-1.000 E, PD M-2.000 E, PD M-3.000 E

Our mixing units of series PD M-1.000 E, PD M-2.000 E, PD M-3.000 E, as well as any other component, manufactured by **PRIME DRILLING®** are developed according to the requirements of the respective projects.

A complete mixing unit type PD M-1.000 E, PD M-2.000 E, PD M-3.000 E consists of a 20 ft. container with integrated mixing unit or a separate 10 ft. mixing cube, that is placed in front of a mixing container. These two parts are connected by drilling fluid hoses and so we get a mixing circuit.

The mixing unit type PD M-1.000 E, PD M-2.000 E, PD M-3.000 E consists of the following components: 1 x mixing container, 1 x transfer pump 22 - 45 kW, 1 x mixing pump 22 - 75 kW. The mixing cube is modularly installed and can be extended or modified user defined according to customer's requirements. The transfer and mixing pumps are driven by electric motors powered by 22 - 45 kW.



Mixing Units

Part No.	Mixing pump	Transfer pump	Mixing power rate	Container size mixing cube	Container size per tank
PD M-1.000 0,8 E	22 kW	22 kW	800 l/min	10 ft.	20 ft.
PD M-1.000 1,1 E	22 kW	22 kW	1,000 l/min	10 ft.	20 ft.
PD M-1.000 1,4 E	22 kW	22 kW	1,400 l/min	10 ft.	20 ft.
PD M-2.000 1,6 E	22 kW	22 kW	1,600 l/min	10 ft.	20 ft.
PD M-2.000 2,1 E	45 kW	45 kW	2,100 l/min	10 ft.	3x 20 ft.
PD M-2.000 2,4 E	45 kW	45 kW	2,400 l/min	10 ft.	3x 20 ft.
PD M-3.000 2,7 E	45 kW	45 kW	2,700 l/min	10 ft.	40 ft.
PD M-3.000 3,0 E	75 kW	45 kW	3,000 l/min	10 ft.	40 ft.
PD M-3.000 3,5 E	75 kW	45kW	3,500 l/min	10 ft.	40 ft.



Spare Parts Mixing Units



Agitator

Part No.	Power	Nominal voltage	Nominal speed
PD-160-10000	1.5 kW	400 V	710 1/min



Butterfly valves

Part No.	Size Ø
PD-169-10000	3"
PD-169-10001	4"
PD-169-10002	5"
PD-169-10003	6"



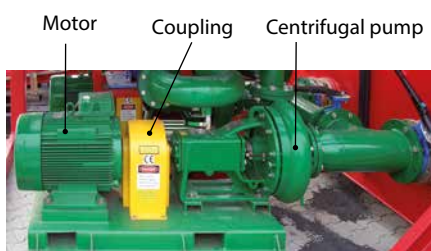
Mud hopper

Part No.	Size Ø
PD-169-10004	6"



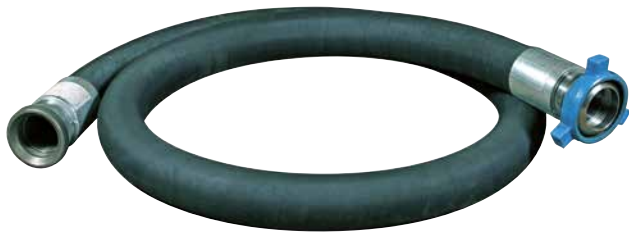
Venturi

Part No.	Size Ø
PD-169-10005	6"



Centrifugal pump components

Part No.	Components
PD-011-10000	Electric motor 22.5 kW
PD-012-10010	Coupling
PD-161-10000	Centrifugal pump 6" x 5" x 14"
PD-011-10001	Electric motor 45 kW
PD-011-10012	Coupling
PD-161-10002	Centrifugal pump 4" x 3" x 13"



Drilling fluid high pressure hoses including couplings

Part No.	Ø x Length
PD-072-10003	2" x 5,000 mm
PD-072-10004	2" x 10,000 mm
PD-072-10005	3" x 5,000 mm
PD-072-10006	3" x 10,000 mm
PD-072-10000	4" x 5,000 mm
PD-072-10007	4" x 10,000 mm

Couplings for drilling fluid high pressure hoses

Part No.	For hose Ø
PD-171-10005	2"
PD-171-10014	3"
PD-171-10013	4"



Drilling fluid suction hoses incl. couplings

Part No.	Ø x Length
PD-172-10008	3" x 10,000 mm
PD-172-10009	4" x 10,000 mm
PD-172-10010	5" x 10,000 mm
PD-172-10011	6" x 10,000 mm
PD-172-10012	8" x 10,000 mm



Perrot quick couplings

Part No.	For hose Ø
PD-172-10013	3"
PD-172-10014	4"
PD-172-10015	5"
PD-172-10016	6"
PD-172-10017	8"



Hose clamps for Perrot quick couplings

Part No.	for hose Ø
PD-172-10018	3"
PD-172-10019	4"
PD-172-10020	5"
PD-172-10021	6"
PD-172-10022	8"



Drilling fluid filters

Part No.	Capacity
PD-1000-01-01	800 - 1,500 l/min
PD-1000-01-02	1,500 - 2,500 l/min
PD-1000-01-03	3,000 - 3,500 l/min

Liner wash pump

Part No.	Flow rate	Voltage rating
PD-021-10002	150 l/min	24 V



Recycling Units

PD R-1.000 E, PD R-2.000 E, PD R-3.000 E

To protect the environment and to save costs we also supply recycling units for reprocessing of the drilling fluid when contaminated by sand and mud. The recycling units are equipped with sieve screens and hydro-cyclones (so called „desanders“ and „desilters“), which wash the solids out of the drilling fluid to less than 1 % and thus minimize wear of the pump.

Due to the modular construction (20 ft. container) a maximum of flexibility is guaranteed. Our systems excel in easy handling for height adjustment, quick-change systems for the sieve screens as well as worldwide availability of replacement sieve elements of any size. The circulation pumps, which feed the drilling fluid into the recycling circuit and the transfer pumps are equipped with electric motors. Depending on the size of the recycling unit, the recycling volume rates come up to 800 to 3,500 l/min.

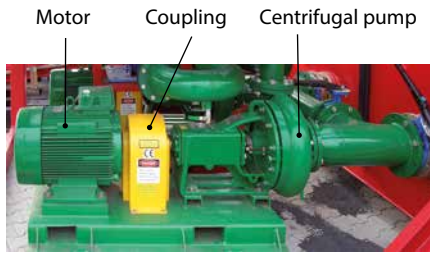


Recycling Units

Part No.	Loading pump	Transfer pump	Recycling power rate	Container size platform	Container size tank
PD R-1.000 0,8 E	45 kW	15 kW	800 l/min	2x 15 ft.	20 ft.
PD R-1.000 1,1 E	45 kW	15 kW	1,100 l/min	2x 15 ft.	20 ft.
PD R-1.000 1,4 E	45 kW	15 kW	1,400 l/min	2x 15 ft.	20 ft.
PD R-2.000 1,6 E	55 kW	22 kW	1,600 l/min	2x 15 ft.	20 ft.
PD R-2.000 2,1 E	55 kW	22 kW	2,100 l/min	2x 15 ft.	20 ft.
PD R-2.000 2,4 E	55 kW	22 kW	2,400 l/min	2x 15 ft.	20 ft.
PD R-3.000 2,7 E	75 kW	45 kW	2,700 l/min	2x 15 ft.	20 ft.
PD R-3.000 3,0 E	75 kW	45 kW	3,000 l/min	3x 15 ft.	20 ft.
PD R-3.000 3,5 E	75 kW	45 kW	3,500 l/min	3x 15 ft.	20 ft.



Spare Parts Recycling Units



Centrifugal pump components

Part No.	Components
PD-011-10000	Electric motor 22.5 kW
PD-012-10010	Coupling
PD-161-10002	Centrifugal pump 4" x 3" x 13"
PD-011-10001	Electric motor 45 kW
PD-012-10011	Coupling
PD-161-10000	Centrifugal pump 6" x 5" x 14"
PD-011-10003	Electric motor 55 kW
PD-012-10012	Coupling
PD-161-10003	Centrifugal pump 8" x 6" x 14"



Cyclones

Part No.	Size Ø
PD-169-10006	4"
PD-169-10008	6"
PD-169-10007	10"



Vibration motor

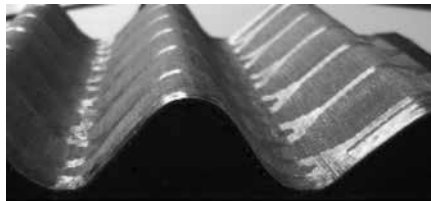
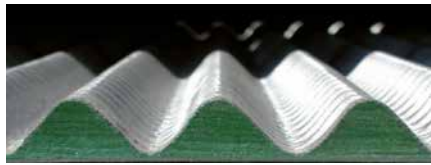
Part No.	Nominal voltage	Frequency
PD-011-10002	380 V	50 Hz



HP screens flat, type PWP

Part No.	Size
PD-162-10000	HP-A 325 mm
PD-162-10001	HP-A 270 mm
PD-162-10002	HP-A 230 mm
PD-162-10003	HP-A 200 F mm
PD-162-10004	HP-A 200 mm
PD-162-10005	HP-A 170 mm
PD-162-10006	HP-A 140 mm
PD-162-10007	HP-A 120 mm
PD-162-10008	HP-A 100 mm
PD-162-10009	HP-A 80 mm
PD-162-10010	HP-A 70 mm
PD-162-10011	HP-A 60 mm
PD-162-10012	HP-A 50 mm
PD-162-10013	HP-A 45 mm
PD-162-10014	HP-A 40 mm
PD-162-10015	HP-A 35 mm





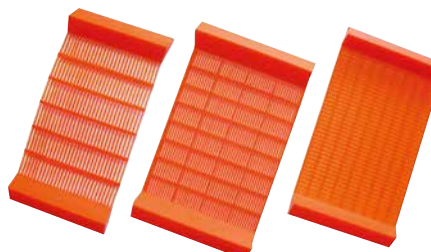
HP screens pyramid standard, type PMD

Part No.	Size
PD-162-10016	HP-A 325 mm
PD-162-10017	HP-A 270 mm
PD-162-10018	HP-A 230 mm
PD-162-10019	HP-A 200 F mm
PD-162-10020	HP-A 200 mm
PD-162-10021	HP-A 170 mm
PD-162-10022	HP-A 140 mm
PD-162-10023	HP-A 120 mm
PD-162-10024	HP-A 100 mm
PD-162-10025	HP-A 80 mm
PD-162-10026	HP-A 70 mm
PD-162-10027	HP-A 60 mm
PD-162-10028	HP-A 50 mm
PD-162-10029	HP-A 45 mm
PD-162-10030	HP-A 40 mm
PD-162-10031	HP-A 35 mm



HP screens pyramid, type PMD+

Part No.	Size
PD-162-10033	HP-A 325 mm
PD-162-10034	HP-A 270 mm
PD-162-10035	HP-A 230 mm
PD-162-10036	HP-A 200 F mm
PD-162-10037	HP-A 200 mm
PD-162-10038	HP-A 170 mm
PD-162-10039	HP-A 140 mm
PD-162-10040	HP-A 120 mm
PD-162-10041	HP-A 100 mm
PD-162-10042	HP-A 80 mm
PD-162-10043	HP-A 70 mm
PD-162-10044	HP-A 60 mm
PD-162-10045	HP-A 50 mm
PD-162-10046	HP-A 45 mm
PD-162-10047	HP-A 40 mm
PD-162-10048	HP-A 35 mm



Polyurethane screens, type TH

Part No.	Size
PD-162-10049	DX-A 325 mm
PD-162-10050	DX-A 270 mm
PD-162-10051	DX-A 230 mm
PD-162-10052	DX-A 200 F mm
PD-162-10053	DX-A 200 mm
PD-162-10054	DX-A 170 mm
PD-162-10055	DX-A 140 mm
PD-162-10056	DX-A 120 mm
PD-162-10057	DX-A 100 mm
PD-162-10058	DX-A 80 mm
PD-162-10059	DX-A 70 mm
PD-162-10060	DX-A 60 mm
PD-162-10061	DX-A 50 mm
PD-162-10062	DX-A 45 mm
PD-162-10063	DX-A 40 mm
PD-162-10064	DX-A 35 mm

Service and Support

We know that time is money

Therefore we believe that you need a supplier who knows more than how to take a pump apart.

We offer professional service not only for the X-pumps, but also for all major pump brands. Our specialists are well versed in the repair of reciprocating and centrifugal pumps .

Our extensive service includes oil change up to a complete overhaul with a fresh painting in every desired colour.

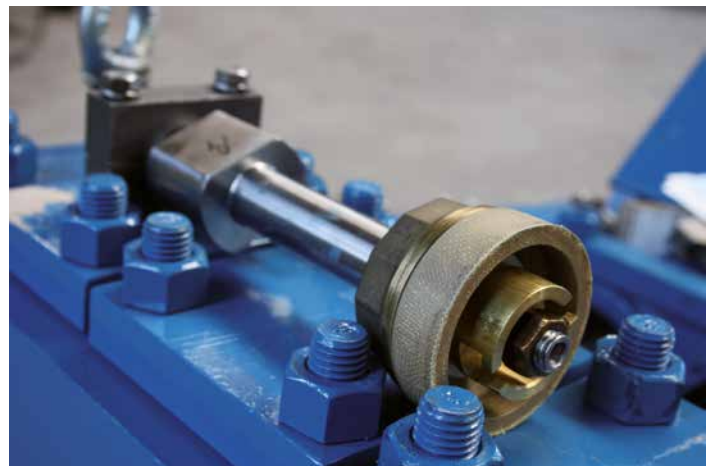
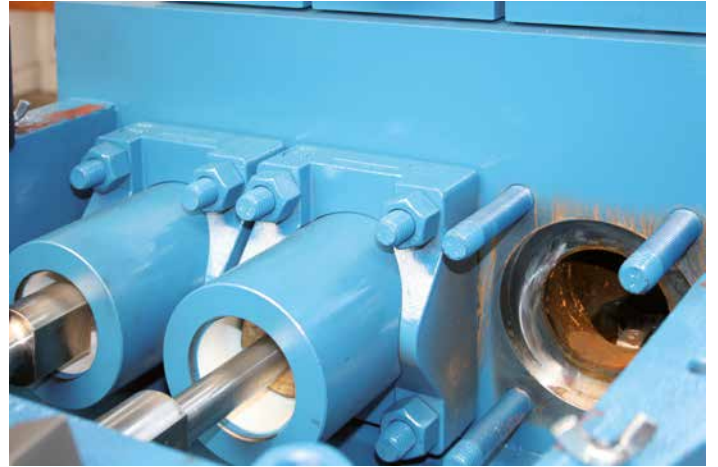
We purchase our spare parts directly from all major pump manufactures such as FMC, Weatherford, Kerr, MCM, Flomax etc. Most spare parts are directly available from our well-equipped warehouse in Wenden, Germany. Even when a pump is obsolete we can supply spare parts.

Our workshop is well equipped to do all kind of repairs, for example for the overhaul and repair of defective crankshafts.

Of course we also offer pump service and repairs directly on your jobsite.

Whether you are planning a new project or just wish to optimize your current pump facilities, we would be pleased to provide our advice and support.











По вопросам продаж и поддержки обращайтесь:

Архангельск (8182)63-90-72
Астана +7(7172)727-132
Белгород (4722)40-23-64
Брянск (4832)59-03-52
Владивосток (423)249-28-31
Волгоград (844)278-03-48
Вологда (8172)26-41-59
Воронеж (473)204-51-73
Екатеринбург (343)384-55-89
Иваново (4932)77-34-06
Ижевск (3412)26-03-58
Казань (843)206-01-48

Калининград (4012)72-03-81
Калуга (4842)92-23-67
Кемерово (3842)65-04-62
Киров (8332)68-02-04
Краснодар (861)203-40-90
Красноярск (391)204-63-61
Курск (4712)77-13-04
Липецк (4742)52-20-81
Магнитогорск (3519)55-03-13
Москва (495)268-04-70
Мурманск (8152)59-64-93
Набережные Челны (8552)20-53-41

Нижний Новгород (831)429-08-12
Новокузнецк (3843)20-46-81
Новосибирск (383)227-86-73
Орел (4862)44-53-42
Оренбург (3532)37-68-04
Пенза (8412)22-31-16
Пермь (342)205-81-47
Ростов-на-Дону (863)308-18-15
Рязань (4912)46-61-64
Самара (846)206-03-16
Санкт-Петербург (812)309-46-40
Саратов (845)249-38-78

Смоленск (4812)29-41-54
Сочи (862)225-72-31
Ставрополь (8652)20-65-13
Тверь (4822)63-31-35
Томск (3822)98-41-53
Тула (4872)74-02-29
Тюмень (3452)66-21-18
Ульяновск (8422)24-23-59
Уфа (347)229-48-12
Челябинск (351)202-03-61
Череповец (8202)49-02-64
Ярославль (4852)69-52-93

Единый адрес для всех регионов: pxd@nt-rt.ru || www.pd.nt-rt.ru

...keeps your fluid moving!